

TYPICAL PAD FOOTING DETAILS

REF: S3.1

SPREAD FOOTING REINFORCEMENT SCHEDULE					
FOOTING					
FOOTING MARK	SIZE	QTY	GRID LINE	REINFORCEMENT	REMARK
SF48	4'-0"x4'-0"x1'-3"	7	A/2, A/3, D/1, D/2.7, D/3.6, D/4.5 & G/6	7x2x6 #5 X 3'-6" B EW	REFER TYPICAL DETAILS
SF60	5'-0"x5'-0"x1'-3"	10	B/1, B/2, C/1, C/2, D/2, D.5/1, F/1, F/2.7, F/3.6 & F/5	10x2x6 #5 X 4'-6" B EW	REFER TYPICAL DETAILS
SF72	6'-0"x6'-0"x1'-6"	1	F/4.5	2x7 #7 X 5'-6" B EW	REFER TYPICAL DETAILS

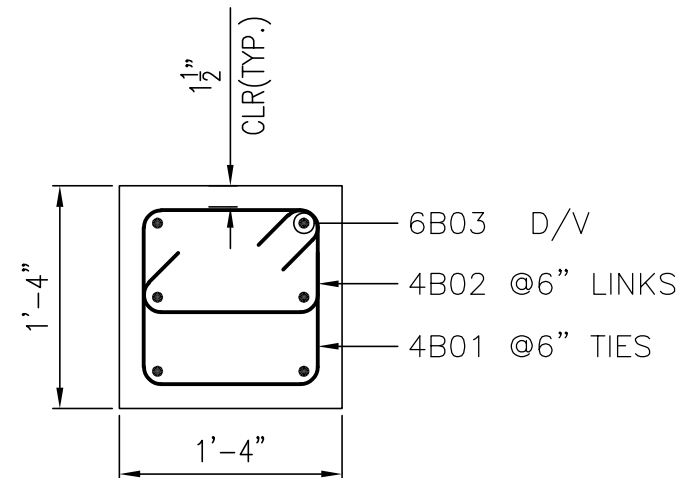
PIER REINFORCEMENT SCHEDULE							
PIER							
PIER MARK	SIZE	T.O.F. EL.	FOOTING THICKNESS	T.O.P. EL.	QTY.	GRID LINE	REINFORCEMENT
P2	1'-4"x1'-4"	-3'-0"	1'-3"	-1'-4"	2	A/2 & D/1	2x8 #6 6B03 D/V 2x2 #4 4B01 @3" TIES@TOP 2x2 #4 4B02 @3" LINKS@TOP 2x3 #4 4B01 @6" TIES 2x3 #4 4B02 @6" LINKS
P2A	1'-4"x1'-4"	-9'-6"	1'-6"	-1'-4"	3	B/5, C/5 & D/5	3x8 #6 6B04 DWLS 3x8 #6 X 8'-0" VERT. 3x2 #4 4B01 @3" TIES@TOP 3x2 #4 4B02 @3" LINKS@TOP 3x16 #4 4B01 @6" TIES 3x16 #4 4B02 @6" LINKS
P2B	1'-4"x1'-4"	-5'-0"	1'-6"	-1'-4"	1	F/4.5	8 #6 6B05 D/V 2 #4 4B01 @3" TIES@TOP 2 #4 4B02 @3" LINKS@TOP 7 #4 4B01 @6" TIES 7 #4 4B02 @6" LINKS
P3	1'-6"x1'-6"	-3'-0"	1'-3"	-1'-4"	1	A/1	8 #6 6B03 D/V 2 #4 4B06 @3" TIES@TOP 2 #4 4B07 @3" LINKS@TOP 3 #4 4B06 @6" TIES 3 #4 4B07 @6" LINKS
P3A	1'-6"x1'-6"	-9'-6"	1'-3"	-1'-4"	1	A/5	8 #6 6B04 DWL 8 #6 X 8'-0" VERT. 2 #4 4B06 @3" TIES@TOP 2 #4 4B07 @3" LINKS@TOP 16 #4 4B06 @6" TIES 16 #4 4B07 @6" LINKS
P4	1'-4"x2'-0"	-3'-0"	1'-3"	-1'-4"	3	A/2.7, B/1 & C/1	12 #6 6B03 D/V 2 #4 4B08 @3" TIES@TOP 2 #4 4B09 @3" LINKS@TOP 3 #4 4B08 @6" TIES 3 #4 4B09 @6" LINKS
P4A	1'-4"x2'-0"	-9'-6"	1'-6"	-1'-4"	1	A/4	12 #6 X 8'-0" VERT. 12 #6 6B04 DWLS 2 #4 4B08 @3" TIES@TOP 2 #4 4B09 @3" LINKS@TOP 16 #4 4B08 @6" TIES 16 #4 4B09 @6" LINKS
P4B	1'-4"x2'-0"	-5'-0"	1'-6"	-1'-4"	1	E/4.5	12 #6 6B05 D/V 2 #4 4B08 @3" TIES@TOP 2 #4 4B09 @3" TIES@TOP 7 #4 4B08 @6" TIES 7 #4 4B09 @6" TIES
P5	1'-4"x3'-0"	-9'-6"	1'-3"	-1'-4"	1	E/5	12 #6 X 8'-0" VERT. 12 #6 6B14 D/V 2 #4 4B10 @3" TIES@TOP 2 #4 4B11 @3" INNER TIES@TOP 2 #4 4B12 @3" INNER TIES@TOP 2 #4 4B13 @3" LINKS@TOP 16 #4 4B10 @6" TIES 16 #4 4B11 @6" INNER TIES 16 #4 4B12 @6" INNER TIES 16 #4 4B13 @6" LINKS
P6	1'-6"x2'-0"	-3'-0"	1'-3"	-1'-4"	1	D.5/1	12 #6 6B03 D/V 2 #4 4B15 @3" TIES@TOP 2 #4 4B09 @3" LINKS@TOP 3 #4 4B15 @6" TIES 3 #4 4B09 @6" LINKS
P7	1'-6"x3'-8"	-3'-0"	1'-3"	-1'-4"	1	F/1	16 #6 6B03 D/V 2 #4 4B16 @3" TIES@TOP 2 #4 4B17 @3" INNER TIES@TOP 2 #4 4B06 @3" INNER TIES@TOP 2 #4 4B07 @3" LINKS@TOP 2 #4 4B18 @3" LINKS@TOP 3 #4 4B16 @6" TIES 3 #4 4B17 @6" INNER TIES 3 #4 4B06 @6" INNER TIES 3 #4 4B07 @6" LINKS 3 #4 4B18 @6" LINKS

(ENG'R PLEASE VERIFY THE CLOUDED PIER TOP ADDITIONAL TIES SPACING)

P6 = 1'-6" X 2'-0"

SECTION-5

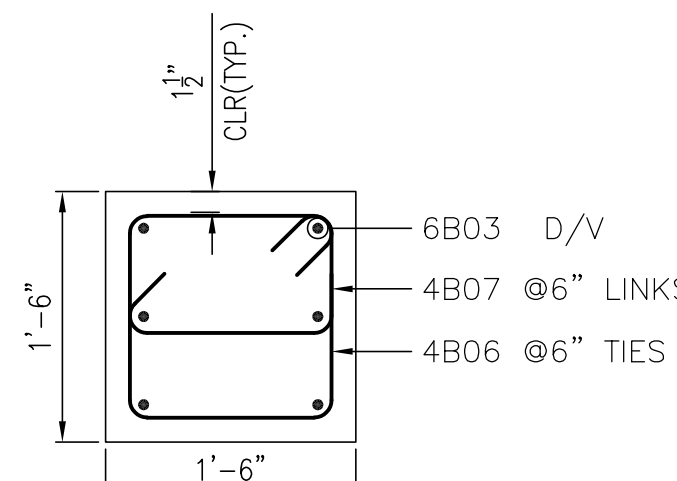
REF: S3.1



P2 = 1'-4" X 1'-4"

SECTION-1

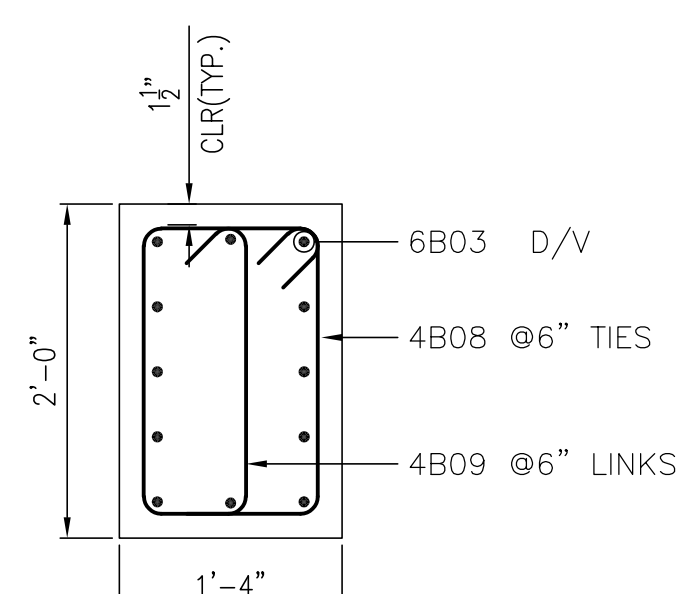
REF: S3.1



P3 = 1'-6" X 1'-6"

SECTION-2

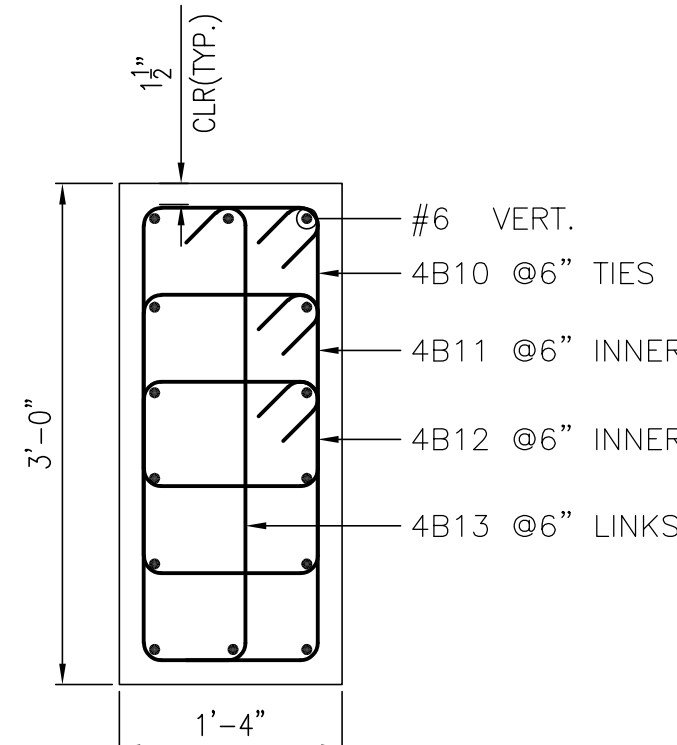
REF: S3.1



P4 = 1'-4" X 2'-0"

SECTION-3

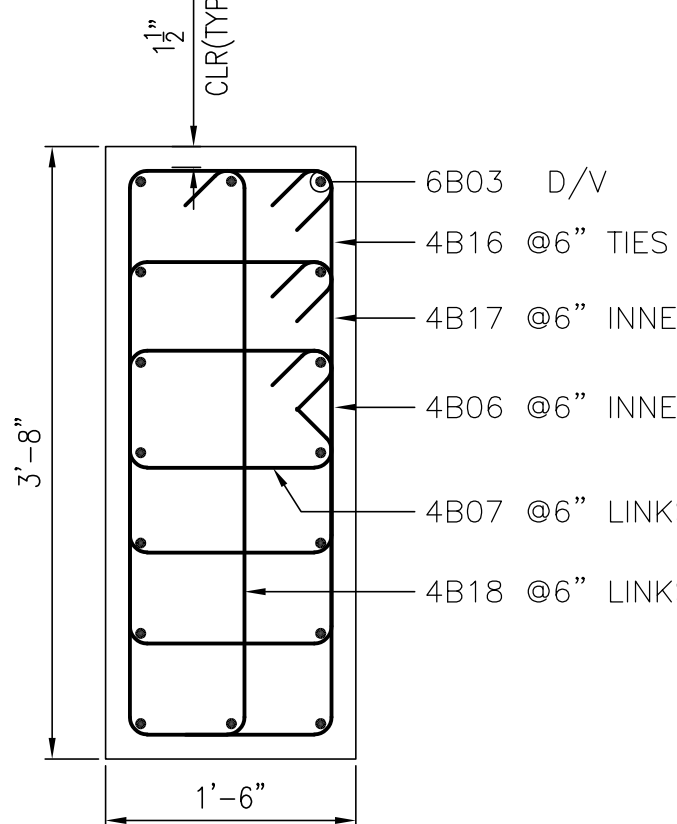
REF: S3.1



P5 = 1'-4" X 3'-0"

SECTION-4

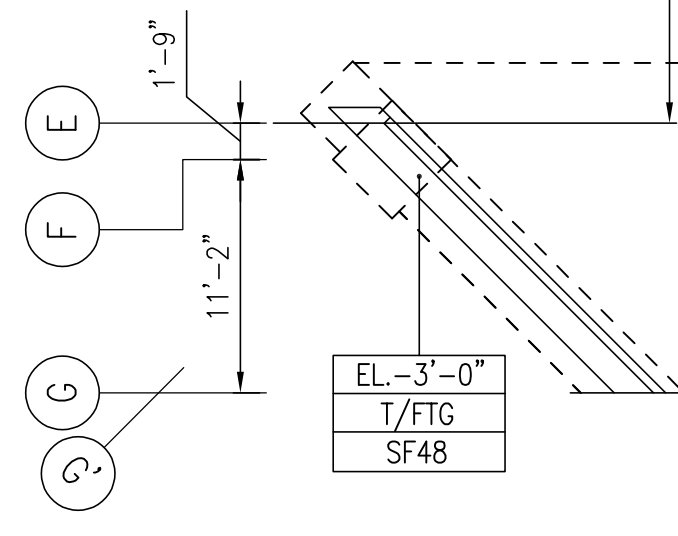
REF: S3.1



P7 = 1'-6" X 3'-8"

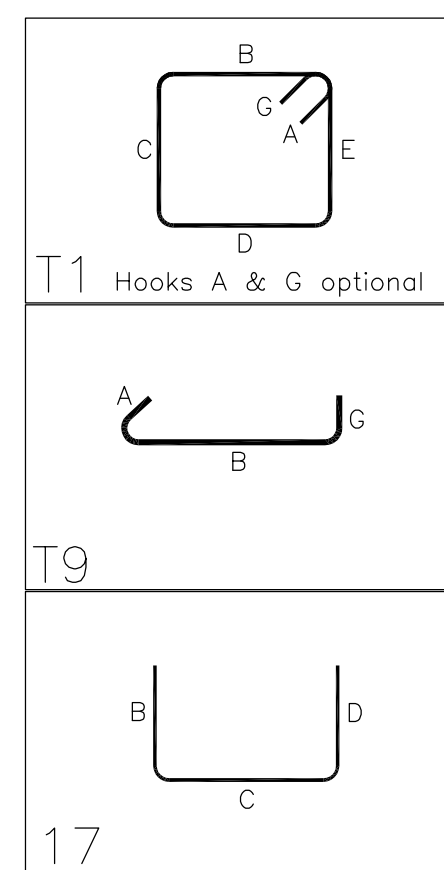
SECTION-6

REF: S3.1



PART-A SPREAD FOOTING AND PIER REINFORCEMENT DETAILS

REF: S1.1 & S2.0



BENDING DETAILS														
Bar Mark	Qty	Size	Total Length	Type	X'	Y'	Z'	W'	V'	U'	T'	S'	R'	Q'
4B01	73	#4	5'-1"	T1	0'-4 3/4"	1'-1"	1'-1"	1'-1"	1'-1"	1'-1"				
4B02	73	#4	1'-10"	T9	0'-4 3/4"	1'-1"								
4B06	28	#4	5'-9"	T1	0'-4 3/4"	1'-3"	1'-3"	1'-3"	1'-3"					
4B07	28	#4	2'-0"	T9	0'-4 3/4"	1'-3"								
4B08	32	#4	6'-5"	T1	0'-4 3/4"	1'-1"	1'-9"	1'-1"	1'-9"					
4B09	37	#4	2'-6"	T9	0'-4 3/4"	1'-9"								
4B10	18	#4	6'-5"	T1	0'-4 3/4"	1'-1"	2'-9"	1'-1"	2'-9"					
4B11	18	#4	6'-4"	T1	0'-4 3/4"	1'-1"	1'-8 3/4"	1'-1"	1'-8 3/4"					
4B12	18	#4	4'-3"	T1	0'-4 3/4"	1'-1"	0'-8"	1'-1"	0'-8"					
4B13	18	#4	3'-6"	T9	0'-4 3/4"	2'-9"								
4B15	5	#4	6'-9"	T1	0'-4 3/4"	1'-3"	1'-9"	1'-3"	1'-9"					
4B16	5	#4	10'-1"	T1	0'-4 3/4"	1'-3"	3'-5"	1'-3"	3'-5"					
4B17	5	#4	7'-11"	T1	0'-4 3/4"	1'-3"	2'-4"	1'-3"	2'-4"					
4B18	5	#4	4'-2"	T9	0'-4 3/4"	3'-5"								
6B03	64	#6	2'-10"	T7	0'-6"	2'-4"								
6B04	44	#6	5'-0"	T7	0'-6"	4'-6"								
6B05	20	#6	5'-1"	T7	0'-6"	4'-7"								
6B14	12	#6	4'-6"	T7	0'-6"	4'-0"								

Bar list produced by RobotCAD 2021.0

REFERENCE DRAWINGS
FOR PART-A SPREAD FOOTING AND PIER REINFORCEMENT DETAILS - REFER DRAWING #R02
FOR PART-B SPREAD FOOTING AND PIER REINFORCEMENT DETAILS - REFER DRAWING #R02a & #R02b

ALL BARS ARE GRADE 60, ASTM A615 EXCEPT MARKED AS SDO

LEGENDS:

- LW - LONG WAY
- SW - SHORT WAY
- VERT. - VERTICAL
- B. - BOTTOM
- T. - TOP
- T/PIER - TOP OF PIER
- T/FTG - TOP OF FOOTING
- D/V - DOWEL CONE VERTICAL
- DWL - DOWEL
- CLR - CLEAR
- EW - EACH WAY
- ES - EACH SIDE
- TYP. - TYPICAL
- SIM. - SIMILAR

NOTES:

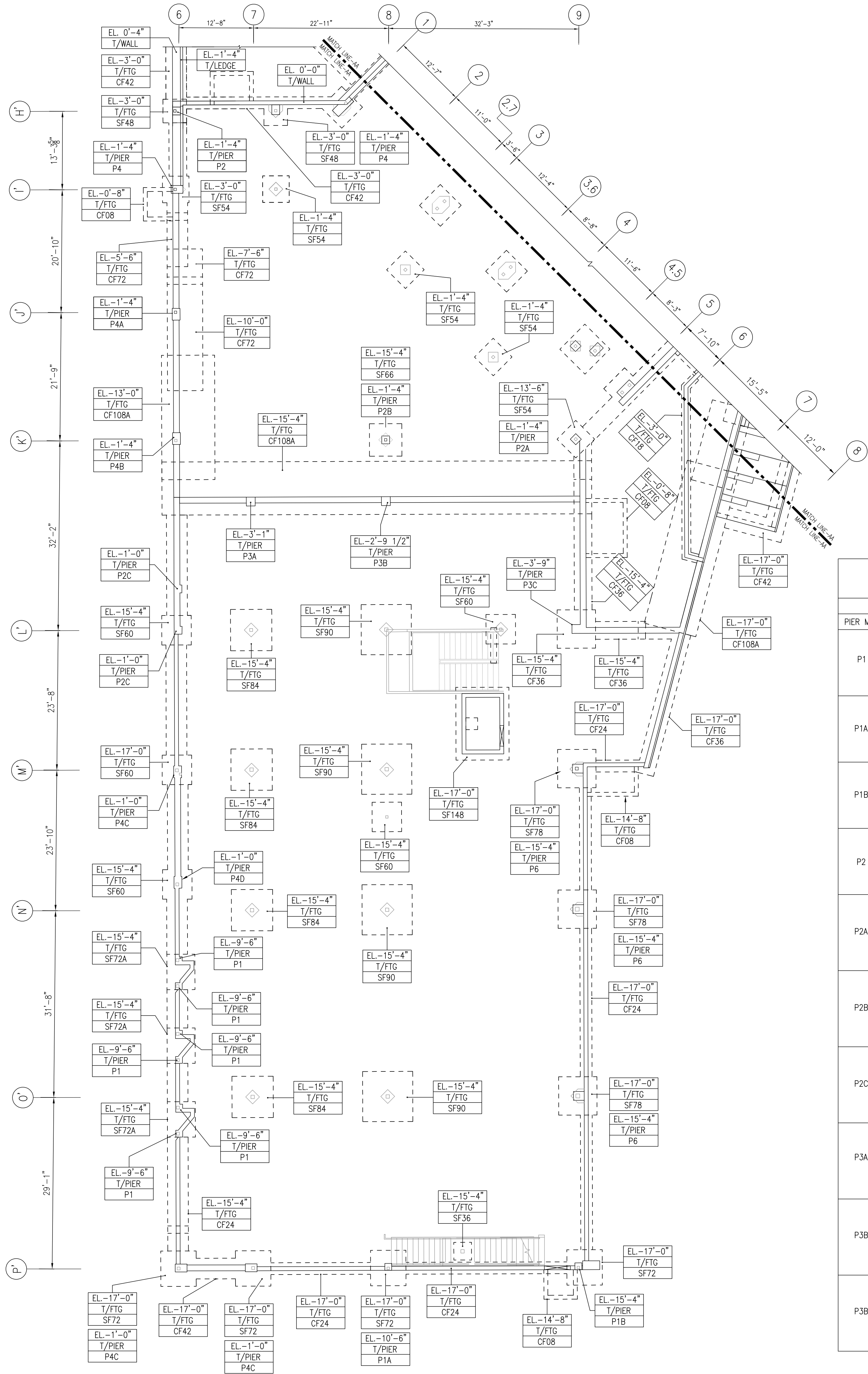
- TOP OF FOOTING EL. PER PLAN
- COVER DETAILS:
FOR FOUNDATION: BOTTOM = 3"
TOP = 2"
SIDE = 3"
- STOCK LENGTH USED IS 30'-0"

SECTION MARK
R01

(ENG'R PLEASE VERIFY THE LAP TABLE (TYP.))

CLASS B LAP 4000 PSI FOR COLUMN

SIZE	TOP	OTHERS
#3	24"	19"
#4	32"	25"
#5	40"	31"
#6	48"	37"
#7	70"	54"
#8	80"	62"
#9	91"	70"
#10	102"	79"
#11	113"	87"

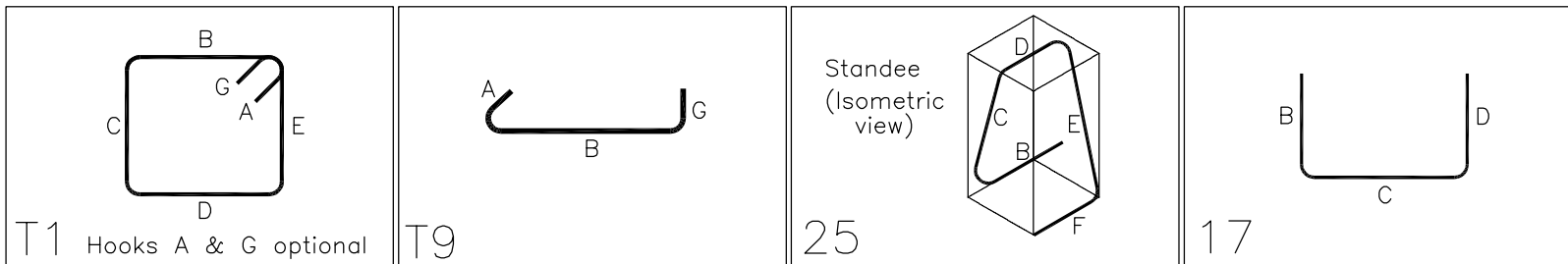


PART-B SPREAD FOOTING AND PIER REINFORCEMENT DETAILS
REF: S1.1 & S2.0

SPREAD FOOTING REINFORCEMENT SCHEDULE					
FOOTING					
FOOTING MARK	SIZE	QTY	GRID LINE	REINFORCEMENT	REMARK
SF36	3'-0"x3'-0"x1'-3"	1	P/8.5'	2x5 #5 X 2'-6" B EW	REFER TYPICAL DETAILS
SF48	4'-0"x4'-0"x1'-3"	1	H/7.2'	2x6 #5 X 3'-6" B EW	REFER TYPICAL DETAILS
SF54	4'-6"x4'-6"x1'-3"	5	L/6', L/7', G/3, G/4 & G/5	5x2x6 #5 X 4'-0" B EW	REFER TYPICAL DETAILS
SF60	5'-0"x5'-0"x1'-3"	5	L/6', L/8.5', M/6', N/6' & M/8'	5x2x6 #5 X 4'-6" B EW	REFER TYPICAL DETAILS
SF66	5'-6"x5'-6"x1'-3"	1	H/7.2'	2x7 #5 X 5'-0" B EW	REFER TYPICAL DETAILS
SF72	6'-0"x6'-0"x1'-6"	4	P/6', P/7', P/8' & P/9'	4x2x7 #7 X 5'-6" B EW	REFER TYPICAL DETAILS
SF72A	4'-0"x6'-0"x1'-6"	3	N.4/6, N.7/6 0.2/6	3x6 #7 X 3'-6" B SW 3x7 #7 X 5'-6" B LW	REFER TYPICAL DETAILS
SF78	6'-6"x6'-6"x1'-6"	4	L/9', M/9', N/9' & O/9'	4x2x7 #7 X 6'-0" B EW	REFER TYPICAL DETAILS
SF84	7'-0"x7'-0"x1'-6"	4	L/7', M/7', N/7' & O/7'	4x2x9 #7 X 6'-6" B EW	REFER TYPICAL DETAILS
SF90	8'-6"x8'-6"x2'-0"	4	L/8, M/8, N/8 & O/8	4x4x7 #7 X 8'-0" T&B EW 4x9 #4 4B19 @4B8" STANDEES	REFER TYPICAL DETAILS

Release Number:		BENDING DETAILS															
Bar Mark	Qty	Size	Total Length	Type	A'	B'	C'	D'	E'	F'	G'	H'	I'	J'	K'	L'	M'
4B01	90	#4	5'-1"	T1	0'-4 1/8"	1'-1"	1'-1"	1'-1"	1'-1"			0'-4 1/8"					
4B02	90	#4	1'-10"	T9	0'-4 1/8"	1'-1"	1'-1"	1'-1"	1'-1"			0'-4 1/8"					
4B06	76	#4	5'-9"	T1	0'-4 1/8"	1'-3"	1'-3"	1'-3"	1'-3"			0'-4 1/8"					
4B07	76	#4	2'-0"	T9	0'-4 1/8"	1'-3"	1'-3"	1'-3"	1'-3"			0'-4 1/8"					
4B19	36	#4	6'-3"	T5		1'-6"	1'-3 1/2"	0'-8"	1'-3 1/2"	1'-6"		1'-3"			0'-7 1/2"		
4B20	106	#4	4'-5"	T1	0'-4 1/8"	0'-11"	0'-11"	0'-11"	0'-11"			0'-4 1/8"					
4B21	106	#4	1'-8"	T9	0'-4 1/8"	0'-11"	0'-11"	0'-11"	0'-11"			0'-4 1/8"					
5B22	48	#5	7'-3"	T7		0'-6"	6'-9"										
5B23	8	#5	7'-11"	T7		0'-6"	7'-5"										
5B24	8	#5	3'-1"	T7		0'-6"	2'-7"										
6B03	8	#6	2'-10"	T7		0'-6"	2'-4"										
6B04	32	#6	5'-0"	T7		0'-6"	4'-6"										
6B25	16	#6	5'-6"	T7		0'-6"	5'-0"										

Bar list produced by RebarCAD 2021.0



REFERENCE DRAWINGS

FOR PART-A SPREAD FOOTING AND PIER REINFORCEMENT DETAILS - REFER DRAWING #R02
FOR PART-B SPREAD FOOTING AND PIER REINFORCEMENT DETAILS - REFER DRAWING #R02A & #R02B

ALL BARS ARE GRADE 60, ASTM A615 EXCEPT MARKED AS SD0

ENG'R PLEASE VERIFY THE
LAP TABLE (TYP.)

CLASS B LAP 4000 PSI FOR COLUMN			
SIZE	TOP	OTHERS	
#3	24"	19"	
#4	32"	25"	
#5	40"	31"	
#6	48"	37"	
#7	70"	54"	
#8	80"	62"	
#9	91"	70"	
#10	102"	79"	
#11	113"	87"	

NOTES:

1. TOP OF FOOTING EL. PER PLAN
 2. COVER DETAILS:
FOR FOUNDATION: BOTTOM = 3"
TOP = 2"
SIDE = 3"
 3. STOCK LENGTH USED IS 30'-0"
- SECTION MARK
R01
- LEGENDS:
LW - LONG WAY
SW - SHORT WAY
VERT. - VERTICAL
B. - BOTTOM
T/PIER - TOP OF PIER
T/FTG - TOP OF FOOTING
D/V - DOWEL COME VERTICAL
CLR - CLEAR
EW - EACH WAY
ES - EACH SIDE
TYP. - TYPICAL
SIM. - SIMILAR

PIER REINFORCEMENT SCHEDULE							
PIER							
PIER MARK	SIZE	T.O.F. EL.	FOOTING THICKNESS	T.O.P. EL.	QTY.	GRID LINE	REINFORCEMENT
P1	1'-2"x1'-2"	EL. -15'-4"	1'-6"	EL. -9'-6"	6	N.3/6, N.5/6, N.7/6, N.8/6, O/6 & O.3/6	6x8 #5 5B22 D/V 6x2 #4 4B20 @3" TIES@TOP 6x2 #4 4B21 @3" LINKS@TOP 6x11 #4 4B20 @6" TIES 6x11 #4 4B21 @6" LINKS
P1A	1'-2"x1'-2"	EL. -17'-0"	1'-6"	EL. -10'-6"	1	P/8'	8 #5 5B23 D/V 2 #4 4B20 @3" TIES@TOP 2 #4 4B21 @3" LINKS@TOP 12 #4 4B20 @6" TIES 12 #4 4B21 @6" LINKS
P1B	1'-2"x1'-2"	EL. -17'-0"	1'-6"	EL. -15'-4"	1	P/9'	8 #5 5B24 D/V 2 #4 4B20 @3" TIES@TOP 2 #4 4B21 @3" LINKS@TOP 12 #4 4B20 @6" TIES 12 #4 4B21 @6" LINKS
P2	1'-4"x1'-4"	-3'-0"	1'-3"	-1'-4"	1	H/6'	8 #6 6B03 D/V 2 #4 4B01 @3" TIES@TOP 2 #4 4B02 @3" LINKS@TOP 3 #4 4B01 @6" TIES 3 #4 4B02 @6" LINKS
P2A	1'-4"x1'-4"	-13'-6"	1'-3"	-1'-4"	1	K/9	8 #6 6B04 DWL 8 #6 X 12'-0" VERT. 2 #4 4B01 @3" TIES@TOP 2 #4 4B02 @3" LINKS@TOP 24 #4 4B01 @6" TIES 24 #4 4B02 @6" LINKS
P2B	1'-4"x1'-4"	-15'-4"	1'-3"	-1'-4"	1	K/8'	8 #6 6B04 DWL 8 #6 X 13'-10" VERT. 2 #4 4B01 @3" TIES@TOP 2 #4 4B02 @3" LINKS@TOP 27 #4 4B01 @6" TIES 27 #4 4B02 @6" LINKS
P2C	1'-4"x1'-4"	-15'-4"	1'-3"	-1'-0"	2	K.8/6' & L/6	8 #6 6B04 DWL 8 #6 X 14'-2" VERT. 2 #4 4B01 @3" TIES@TOP 2 #4 4B02 @3" LINKS@TOP 28 #4 4B01 @6" TIES 28 #4 4B02 @6" LINKS
P3A	1'-6"x1'-6"	-15'-4"	2'-0"	-3'-1"	1	K.4/7'	8 #6 6B25 DWL 8 #6 X 12'-1" VERT. 2 #4 4B06 @3" TIES@TOP 2 #4 4B07 @3" LINKS@TOP 24 #4 4B06 @6" TIES 24 #4 4B07 @6" LINKS
P3B	1'-6"x1'-6"	-15'-4"	2'-0"	EL.-2'-9 1/2"	1	K.4/8'	8 #6 6B25 DWL 8 #6 X 12'-4" VERT. 2 #4 4B06 @3" TIES@TOP 2 #4 4B07 @3" LINKS@TOP 24 #4 4B06 @6" TIES 24 #4 4B07 @6" LINKS
P3B	1'-6"x1'-6"	-15'-4"	2'-0"	EL.-2'-9 1/2"	1	L/9'	8 #6 6B04 DWL 8 #6 X 11'-5" VERT. 2 #4 4B06 @3" TIES@TOP 2 #4 4B07 @3" LINKS@TOP 22 #4 4B06 @6" TIES 22 #4 4B07 @6" LINKS

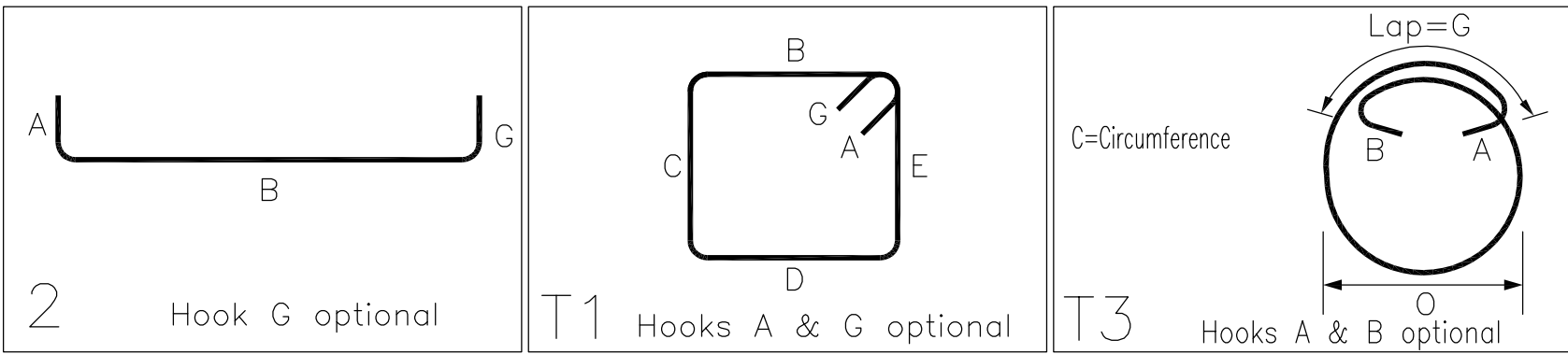
FOR PIER REINFORCEMENT SCHEDULE CONTINUITIES REFER TO DRAWING #R02B

PIER SCHEDULE FOR R002								
PIER MARK	PIER SIZE	FOOTING DEPTH	ELEVATIONS		PIER QTY.	GRID LINE	REINFORCEMENT	REMARK
			T.O.F	T.O.PIER				
P1	1'-4" X 1'-4"	1'-0"	EL. : 97'-6"	EL. 99'-4"	3	6.9/M, 1.6/M & 4.9/M	3x4 #6 6A15 D/V 3x4 #3 3A14 @4" ADD'L TIES 3x1 #3 3A14 @6" TIES	REFER SECTION-16
P2	1'-4" X 1'-4"	1'-0"	EL. : 97'-6"	EL. 99'-4"	1	4.4/M	4 #6 6A15 D/V 4 #3 3A14 @4" ADD'L TIES 1 #3 3A14 @6" TIES	REFER SECTION-16 (SIM.)
P13	2'-0" Ø	1'-0"	EL. : 97'-6"	EL. 121'-3 3/4"	2	0.9/P & 1.8/N	2xØ #6 6A12 DWLS 2xØ #6 X 23'-1" VERT. 2x23 #3 3A13 @12" TIES 2x4 #3 3A13 @4" ADD'L TIES	REFER SECTION-21
	2'-0" Ø	1'-0"	EL. : 97'-6"	EL. 121'-1"	1	4.9/P	Ø #6 6A12 DWLS Ø #6 X 23'-5" VERT. 23 #3 3A13 @12" TIES 4 #3 3A13 @4" ADD'L TIES	REFER SECTION-21 (SIM.)
P16	1'-4" X 1'-4"	1'-0"	EL. : 97'-6"	EL. 99'-4"	1	4.9/M.6	4 #6 6A15 D/V 4 #3 3A14 @4" ADD'L TIES 1 #3 3A14 @6" TIES	REFER SECTION-16 (SIM.)

PIER SCHEDULE FOR R003								
PIER MARK	PIER SIZE	FOOTING DEPTH	ELEVATIONS		PIER QTY.	GRID LINE	REINFORCEMENT	REMARK
			T.O.F	T.O.PIER				
P1	1'-4" X 1'-4"	1'-0"	EL. : 97'-6"	EL. 99'-4"	1	6.9/M	4 #6 6A15 D/V 4 #3 3A14 @4" ADD'L TIES 1 #3 3A14 @6" TIES	REFER SECTION--16 (SIM.)
P3	1'-4" X 1'-4"	1'-0"	EL. : 97'-6"	EL. 99'-4"	1	5.9/M	4 #6 6A15 D/V 4 #3 3A14 @4" ADD'L TIES 1 #3 3A14 @6" TIES	REFER SECTION-16 (SIM.)
P13	2'-0" Ø	1'-0"	EL. : 97'-6"	EL. 121'-6 1/2"	1	5.9/R	Ø #6 6A12 DWLS Ø #6 X 23'-10" VERT. 23 #3 3A13 @12" TIES 4 #3 3A13 @4" ADD'L TIES	REFER SECTION-21 (SIM.)
	2'-0" Ø	1'-0"	EL. : 97'-6"	EL. 121'-9 1/4"	1	6.9/S	Ø #6 6A12 DWLS Ø #6 X 24'-1" VERT. 23 #3 3A13 @12" TIES 4 #3 3A13 @4" ADD'L TIES	REFER SECTION-21 (SIM.)
P15	1'-4" X 1'-4"	1'-0"	EL. : 97'-6"	EL. 99'-4"	1	5.9/M.8	4 #6 6A15 D/V 4 #3 3A14 @4" ADD'L TIES 1 #3 3A14 @6" TIES	REFER SECTION-16 (SIM.)

PIER SCHEDULE FOR R004								
PIER MARK	PIER SIZE	FOOTING DEPTH	ELEVATIONS		PIER QTY.	GRID LINE	REINFORCEMENT	REMARK
			T.O.F	T.O.PIER				
P4	2'-2" X 2'-10"	1'-0"	EL. : 97'-6"	EL:100'-0"	2	1G/A & 5G/A	2x1Ø #6 6A30 D/V 2x4 #3 3A2Ø @4" ADD'L TIES 2x3 #3 3A2Ø @6" TIES	REFER SECTION-17
P6	1'-4" X 1'-6"	1'-0"	EL. : 97'-6"	EL:100'-0"	3	5G/C, 5G/D & 5G/E	3x4 #6 6A30 D/V 3x4 #3 3A21 @4" ADD'L TIES 3x3 #3 3A21 @6" TIES	REFER SECTION-18
P7	1'-4" X 1'-6"	1'-0"	EL. : 97'-6"	EL:100'-0"	3	1G/C, 1G/D & 1G/E	3x4 #6 6A30 D/V 3x4 #3 3A21 @4" ADD'L TIES 3x3 #3 3A21 @6" TIES	REFER SECTION-18 (SIM.)
P8	1'-4" X 1'-6"	1'-0"	EL. : 97'-6"	EL:100'-0"	1	6.9/F	4 #6 6A30 D/V 4 #3 3A21 @4" ADD'L TIES 3 #3 3A21 @6" TIES	REFER SECTION-18 (SIM.)
P9	1'-4" X 1'-6"	1'-0"	EL. : 97'-6"	EL:100'-0"	1	1G/F	4 #6 6A30 D/V 4 #3 3A21 @4" ADD'L TIES 3 #3 3A21 @6" TIES	REFER SECTION-18 (SIM.)
P10	2'-8" X 2'-8"	1'-0"	EL. : 97'-6"	EL:100'-0"	1	5G/B	12 #6 6A30 D/V 4 #3 3A31 @4" ADD'L TIES 3 #3 3A31 @6" TIES	REFER SECTION-19
P11	2'-8" X 2'-8"	1'-0"	EL. : 97'-6"	EL:100'-0"	1	1G/B	12 #6 6A30 D/V 4 #3 3A31 @4" ADD'L TIES 3 #3 3A31 @6" TIES	REFER SECTION-19 (SIM.)
P12	1'-4" X 2'-8"	1'-0"	EL. : 97'-6"	EL:100'-0"	3	2G/A, 3G/A & 4G/A	3xØ #6 6A30 D/V 3x4 #3 3A32 @4" ADD'L TIES 3x1 #3 3A32 @6" TIES	REFER SECTION-20
P14	1'-4" X 1'-4"	2'-0"	EL. : 97'-6"	EL:100'-10"	1	5.9/G	4 #6 6A34 D/V 4 #3 3A14 @4" ADD'L TIES 3 #3 3A14 @6" TIES	REFER SECTION-16 (SIM.)
P15	1'-4" X 1'-4"	2'-0"	EL. : 97'-6"	EL. 99'-4"	1	6.9/G	4 #6 6A34 D/V 4 #3 3A14 @4" ADD'L TIES 1 #3 3A14 @6" TIES	REFER SECTION-16 (SIM.)
P17	1'-4" X 1'-6"	1'-0"	EL. : 97'-6"	EL:100'-0"	3	2G/A, 3G/A & 4G/A	3x4 #6 6A30 D/V 3x4 #3 3A21 @4" ADD'L TIES 3x3 #3 3A21 @6" TIES	REFER SECTION-18 (SIM.)
P18	1'-0" X 1'-0"	2'-0"	EL. : 97'-6"	EL:100'-0"	3	1G.1/B, 2G.1/B, & 3G.1/B	3x4 #6 6A34 D/V 3x4 #3 3A33 @4" ADD'L TIES 3x3 #3 3A33 @6" TIES	REFER SECTION-22

Drawing Sheet : R006					BENDING DETAILS												
Bar Mark	Qty	Size	Total Length	Type	'A'	'B'	'C'	'D'	'E'	'F'	'G'	'H'	'J'	'K'	'O'	'R'	
6A12	40	#6	6'-0"	2	1'-0"	5'-0"											
6A30	112	#6	4'-0"	2	1'-0"	3'-0"											
6A15	32	#6	3'-4"	2	1'-0"	2'-4"											
6A34	20	#6	4'-11"	2	1'-0"	3'-11"											
3A14	52	#3	5'-0"	T1	0'-4"	1'-1"	1'-1"	1'-1"	1'-1"		0'-4"						
3A29	77	#3	5'-4"	T1	0'-4"	1'-1"	1'-3"	1'-1"	1'-3"		0'-4"						
3A13	135	#3	7'-2"	T3	0'-4"	0'-4"	5'-6"				1'-0"				1'-9"		
3A32	15	#3	7'-8"	T1	0'-4"	1'-1"	2'-5"	1'-1"	2'-5"		0'-4"						
3A31	14	#3	10'-4"	T1	0'-4"	2'-5"	2'-5"	2'-5"	2'-5"		0'-4"						
3A33	21	#3	3'-8"	T1	0'-4"	0'-9"	0'-9"	0'-9"	0'-9"		0'-4"						
3A28	14	#3	9'-8"	T1	0'-4"	1'-11"	2'-7"	1'-11"	2'-7"		0'-4"						



A/E/C PLEASE VERIFY THE LAP VALUES IF DIFFERENT THAN SHOWN

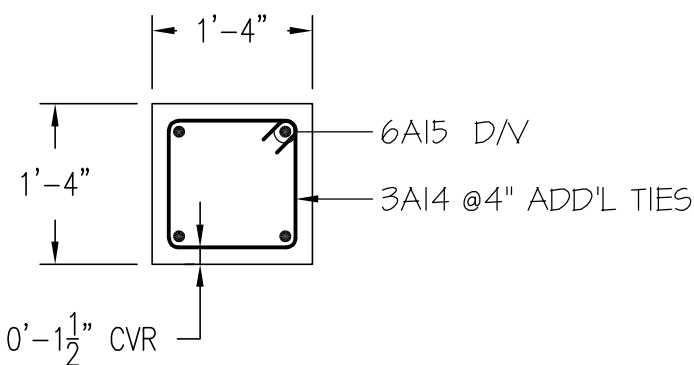
ALL REINFORCEMENTS IN THIS DRAWING ASTM ARE A615 GRADE 60 U.N.O.(BLACK UNCOATED)

SHOP DRAWING INDEX	
DESCRIPTION	DWG.NO:
1.) FOUNDATION (AREA-A) REINFORCEMENT DETAILS	R001
2.) FOUNDATION (AREA-B) REINFORCEMENT DETAILS	R002
3.) FOUNDATION (AREA-C) REINFORCEMENT DETAILS	R003
4.) FOUNDATION (AREA-D) REINFORCEMENT DETAILS	R004
5.) FOUNDATION (AREA-E) REINFORCEMENT DETAILS	R005
6.) PIER SCHEDULE (AREA-B TO AREA C) REINF. DETAILS	R006

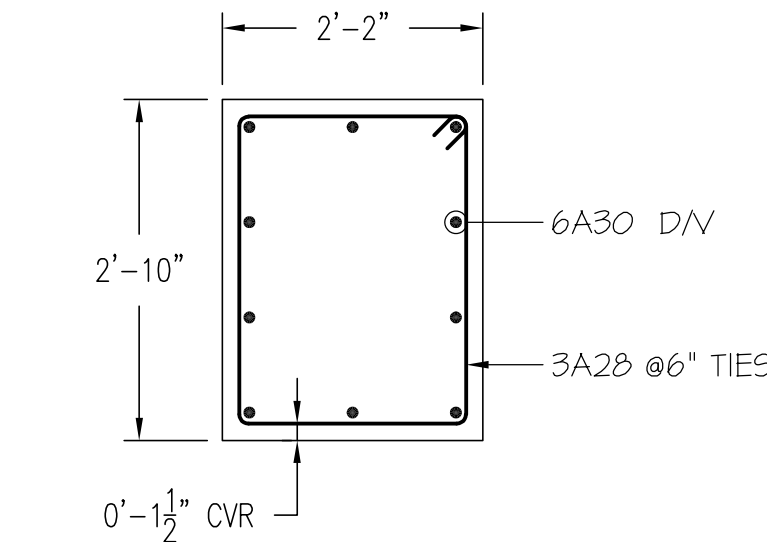
FOR FOUNDATION AND SLAB ON GRADE			FOR FOUNDATION AND SLAB ON GRADE		
LAP SCHEDULE			LD SCHEDULE		
(3000 PSI) CASE-1 & CLASS "B"			(3000 PSI) CASE-1 & CLASS "B"		
SDR: F0.1 & F0.2			SDR: F0.1 & F0.2		
BAR DIA.	TOP	OTHERS	BAR DIA.	TOP	OTHERS
#3	30"	23"	#3	18"	6"
#4	38"	30"	#4	23"	7"
#5	47"	36"	#5	29"	9"
#6	57"	44"	#6	34"	11"
#7	82"	63"	#7	49"	12"
#8	93"	72"	#8	56"	14"

LEGENDS	
T/TOP	- TOP LAYER
B/BOT	- BOTTOM LAYER
SW	- SHORT WAY
LW	- LONG WAY
DWLS	- DOWELS
D/V	- DOWEL/VERTICAL
V/VERT	- VERTICAL
H/HORIZ	- HORIZONTAL
ES	- EACH SIDE
EE	- EACH END
EF	- EACH FACE
COR.	- CORNER
T.O.S	- TOP OF SLAB
T.O.FTC	- TOP OF FOOTING
TRANS.	- TRANSVERSE
CONT	- CONTINUOUS
ADD'L	- ADDITIONAL
EL	- ELEVATION
TYP	- TYPICAL

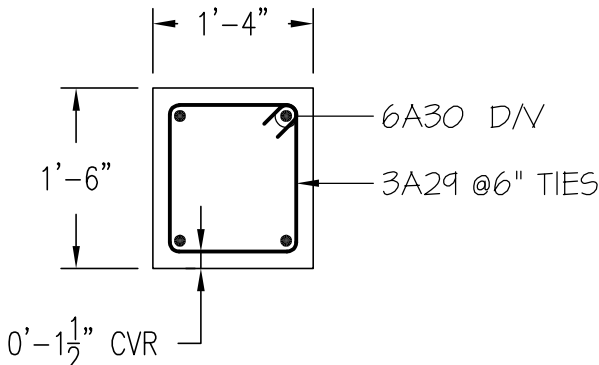
MINIMUM CONCRETE COVER DETAILS			
SI NO :	CONC. ELEMENT	DESCRIPTION	COVER (INCHES)
1	FOR FOOTING	AT TOP	2"
		AT SIDES	3"
		AT BOTTOM	3"
2	FOR PIER	AT TOP & BOTTOM	2"
		AT SIDES	1 1/2"
SPECIAL NOTES :			
1. TILT HOOK TO ACCOMMODATE THE COVER, IF NEED			
2. BARS TO BE PLACED AT EQUAL SPACING U.O.N.			
3. CUT TO FIT AT SITE AS REQUIRED			



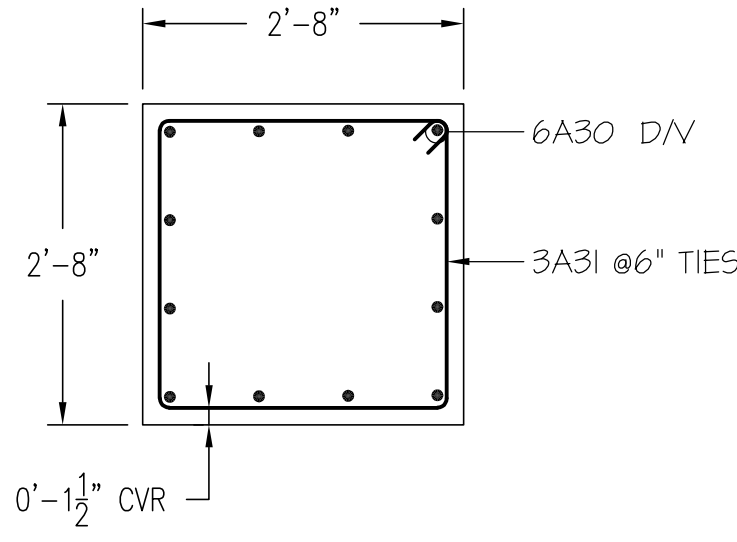
SECTION 16
SCALE = 1/2" = 1'-0"
REF: F0.3



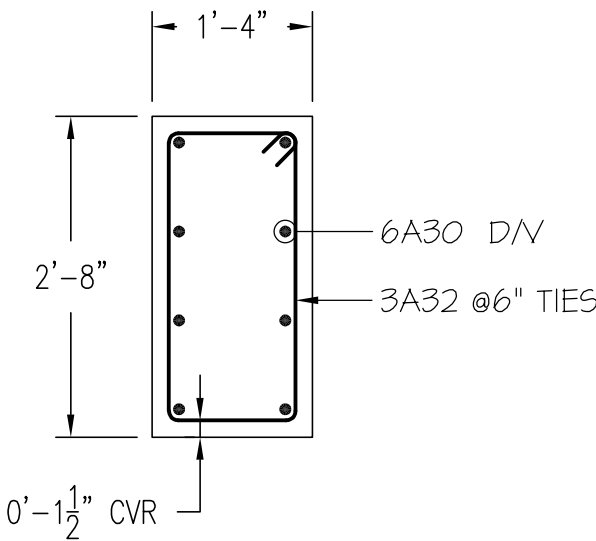
SECTION 17
SCALE = 1/2" = 1'-0"
REF: F0.3



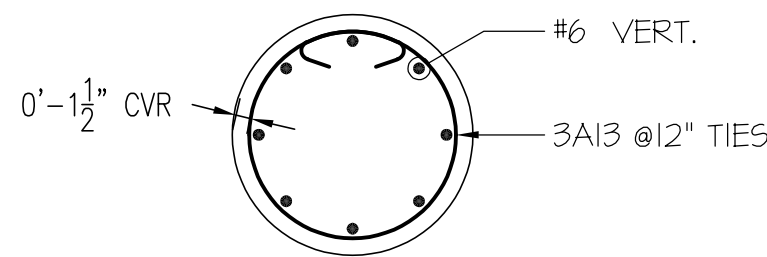
SECTION 18
SCALE = 1/2" = 1'-0"
REF: F0.3



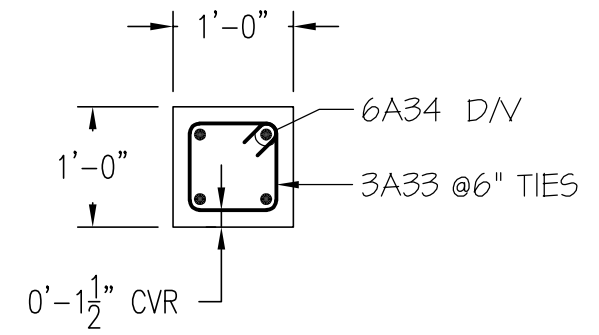
SECTION 19
SCALE = 1/2" = 1'-0"
REF: F0.3



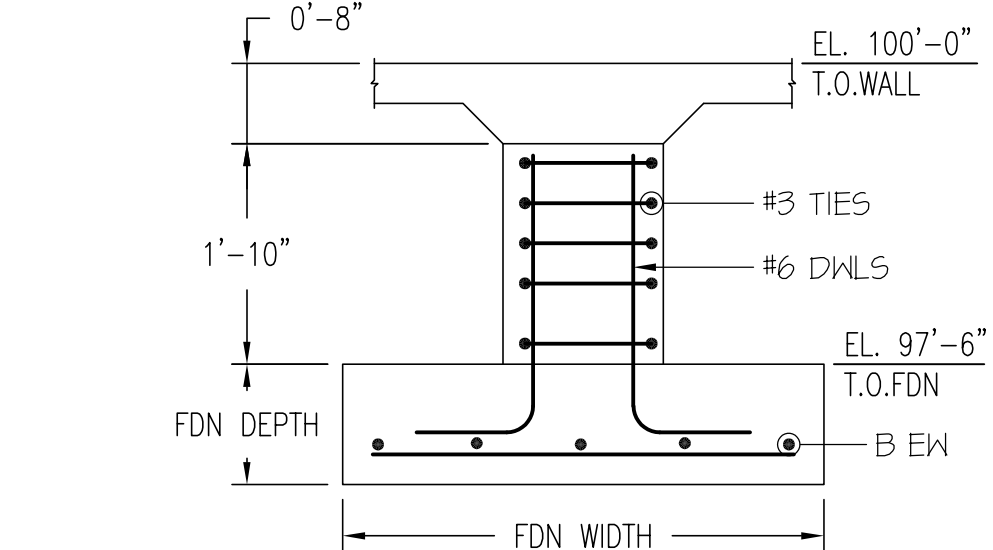
SECTION 20
SCALE = 1/2" = 1'-0"
REF: F0.3



SECTION 21
SCALE = 1/2" = 1'-0"
REF: F0.3



SECTION 22
SCALE = 1/2" = 1'-0"
REF: F0.3



TYPICAL SPREAD FOOTING AND PIER
REBAR ARRANGEMENT DETAILS
SCALE = 1/2" = 1'-0"
REF: 1/F2.0